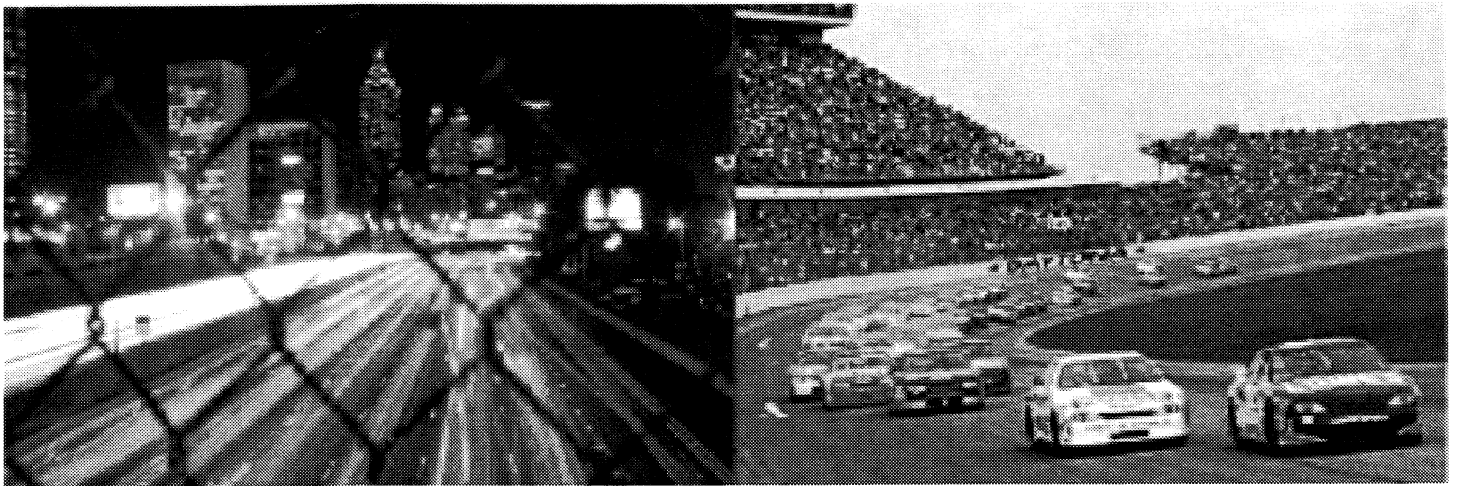


## Two Projects: Another Atlantic Steel and The (con)Temporary Film Institute

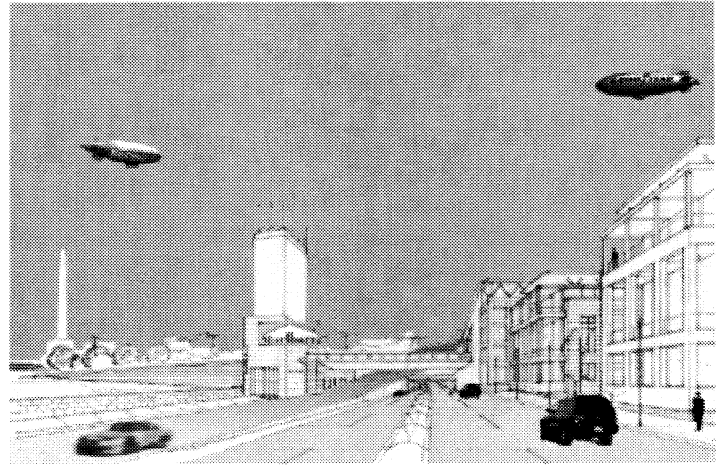
MICHAEL E. GAMBLE  
Georgia Institute of Technology

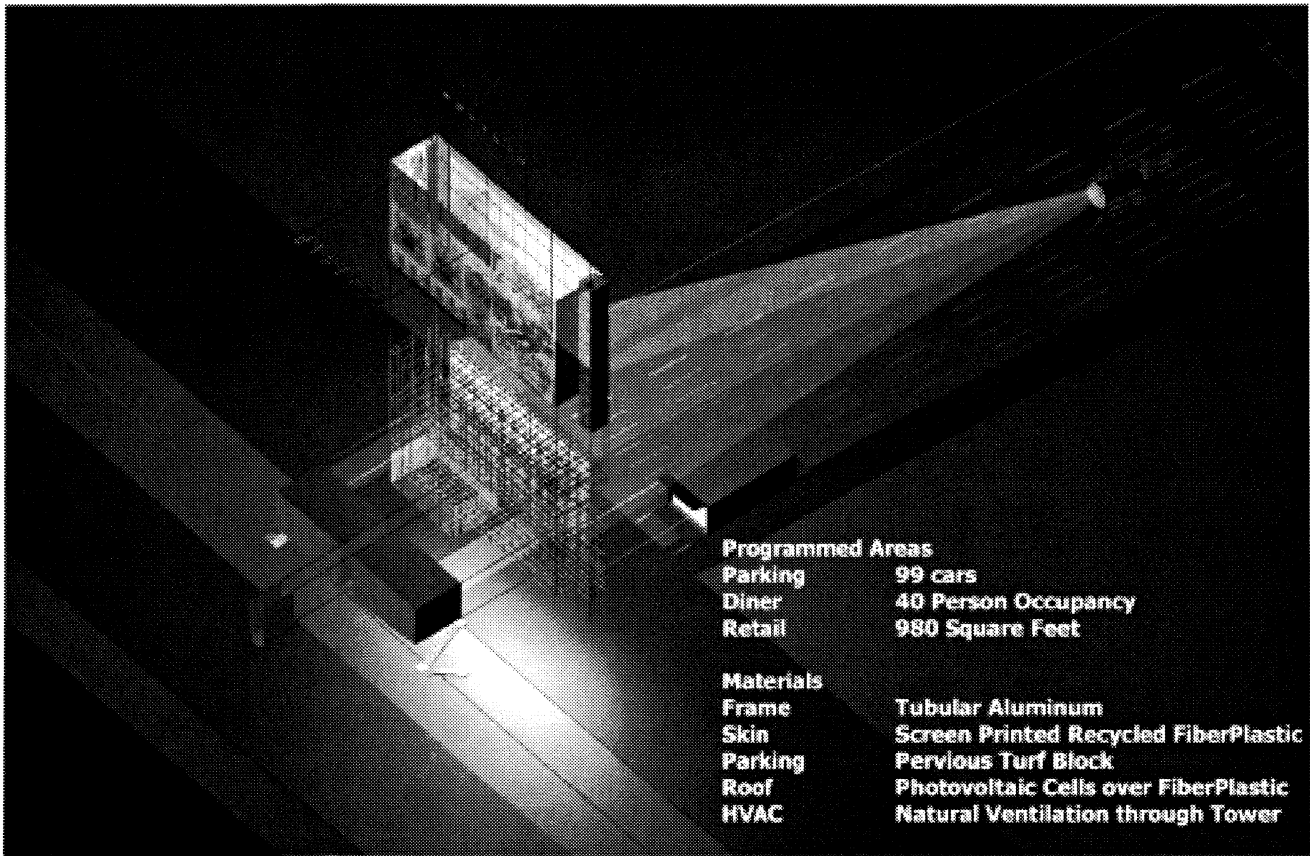


### ANOTHER ATLANTIC STEEL

The now defunct Atlantic Steel, America's largest brownfield reclamation project, is situated to become a model for urban redevelopment. Atlanta, haven to numerous large scale sporting facilities and the consummate auto congested contemporary city, provides the social, economic and political narrative for this proposal. From defensive driving classes, weekend NASCAR and Grand Prix Events, large scale auto, etc. conventions, to sound affordable housing, workspace and shopping spaces, our proposal embraces the

existing street and circulation patterns of the contemporary city. These new amenities are woven into a 1.9-mile racing loop. Multiple speeds and layers of movement overlap at numerous instances in the revitalized neighborhood. The infield of the development is open to vehicular, recreational and pedestrian circulation 24/7, while the track, the greatest 20th century sporting venue in the city, supports a variety of functions ingrained in the daily lives of Atlanta's 3 million inhabitants.





**THE (CON)TEMPORARY FILM INSTITUTE**

Public space is where the meaning and the unity of the social is negotiated. As public spaces are slowly absorbed by privatization and the definition of the social evolves, one must take stock of those spaces, public and private, which constitute a primary place of interaction. The parking lot, as many of us know, is the most frequently experienced urban space in Atlanta. As a component of a viable urban fabric, Richard Dagenhart states, "Atlanta's parking lots lead to nowhere."

During the day, the (Con)Temporary Film Institute operates as most parking lots in the vicinity, accommodating the flow of traffic. In the evening, when many of the adjacent lots have little to no occupancy, the Institute is busy, showing a double feature 7 nights a week outside and inside. The aluminum frame, photovoltaic cells, and lightweight skin contribute to the ephemeral nature of the project. On short notice, as new clients come forward with plans for permanent structures, the (Con)Temporary Film Institute can be disassembled and reconstructed elsewhere, at minimum cost and maximum reusability.

